

# 2010 Viking House Open House

Hosted By **PARR**  
LUMBER®

**Date:** June 4<sup>th</sup> & 5<sup>th</sup> **Time:** Noon to 5 p.m. **Location:** 1222 35th Avenue  
**Directions:** Go north on Brooke Street (behind the high school stadium), west on 35<sup>th</sup> Avenue.



*The 2010 Viking House Crew invites you to see the finished results of their year-long project.*

*Throughout the 2009-2010 school-year, the Advanced Building Construction class at FGHS has performed all of the major carpentry tasks in the construction of this outstanding home.*

(Back) Kyle Ludwick, Nick Robbins, John Friend, Patrick Winterbourne, Josh Sandage. Josh Pronozuk,  
(Middle) Jessica Brooks, April Roma, Daniel Greaves, Weston Duyck, Jonnette Gordon, Tyler Jensen  
(Front) Mr. Higginbotham, Valerie Bongiorno, Jessica Calderon-Duyck, Justin Seitz, Sheyn Higginbotham



**Thank you to the following businesses for full donations of goods or service:**



**Thank you to the following for extending us special rates or assistance:**

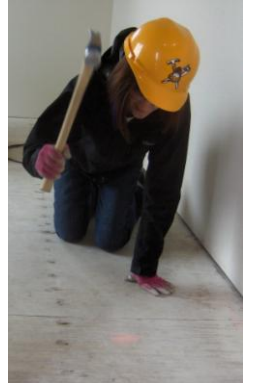
All Weatherization  
Bud Bolden Masonry  
CB Paint Co.  
Contract Furnishings Mart  
Forest Grove Light & Power  
GRANDE Foods  
Guy and Sons Nursery

Henry's Construction  
Innovative Stone  
J&K Roofing  
JW McGhee Construction  
Kraftsman Plumbing  
Lund Woodworking  
Maggie Boehmer

Mar-Hy Distributors  
Muehe Quality Heating, Inc.  
Mueller Construction  
Parr Lumber  
Truss Components  
Union Floor Company  
Woodfold

### **This Home's Features Include:**

1799 Sq. Ft. of Living Space  
Flexible Floorplan - 3 Bedrooms or 2 Bedrooms and a Den.  
2 Baths  
PV-Solar Electric System  
Enclosed Computer Office.  
Tight-knot cedar siding.  
Energy Star certified.  
Hemlock beadboard ceilings in the Great Room.  
Solid white oak flooring in the halls, great room, kitchen, and dining room.  
Fully landscaped and fenced.  
Walk-through mudroom utility area with laundry sink.  
Many built-ins.  
93% Efficient Furnace  
Efficient Conditioned Space Duct System  
13-Seer Heat Pump 8.0 HSPF  
"Island" Gas Fireplace  
Custom Floor Medallion  
Large Patio  
Garden Shed



### **Kitchen**

Gas cooktop with microwave hood.  
Walk-in pantry.  
Upgraded maple cabinets  
Undermounted stainless steel sink.  
Raised Jatoba eating bar.  
Granite countertops throughout.

### **Master Suite**

Large walk-in closet  
Abundant natural light  
Soaking tub  
Tile floors in Master Bath



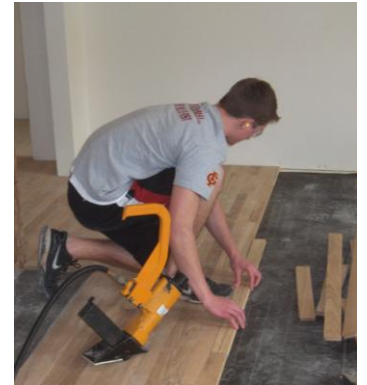
### **Other Contributing Classes:**

**Woods 3 (Mr. Thurber)**

**Basic Construction (Mr. Higginbotham)**

**Interior Design (Mrs. Linhares)**

**Metals (Mrs. Duyck)**



### **A Huge Thank You To:**

**Chuck Thurber – Framing Supervision.**

**Jane Knowlton – Wood flooring supervision and assistance with every phase of the project.**

**Curtis Ludwick – Finish Carpentry Supervision and quality control.**

For More Information Go To: [www.fghsvikinghouse.com](http://www.fghsvikinghouse.com)  
Or Contact Chris Higginbotham (503) 359-2432, Ext. 3610